

Charity No. 1093689

www.routestoroots.org

Routes to Roots - in Joy and in Sadness

As Christmas approached we heard the very good news of the safe arrival of a baby girl for our Outreach worker Scott and his wife Sarah. As the New Year began another child was born, this time making Outreach worker Liz and her husband Roger, first time grandparents. Both these births have been occasions of great joy and celebration for all of us.

Sadly for us, Liz decided that after 4 years of being our Outreach worker it was time for a rest and to enjoy her new grandchild. In February Scott will also be leaving us to pursue a career in the police force. This will undoubtedly be a great loss to us in R2R but we are grateful for all Liz and Scott have given us, not only as extremely dedicated and hardworking Outreach workers but also for the example they have given us all of what it means to be a disciple of Christ and we thank God for them.



In the midst of celebrating new life we have been saddened lately by the news of yet another bereavement bringing the number of guys we have lost in the last six months to four. Richard, Sean, Simon and now Ron were all well known to us, all of them had been in and out of accommodation and all were of a similar age, mid to late 40s. It's a dangerous age for a former rough sleeper for it seems that, even when housed, years of sleeping rough eventually take their toll.

It always grieves us when we lose those we have tried so hard to help and we always wish we could have done more. In the coming days we will be holding a memorial service at which there will be an opportunity for their friends to share memories, and say prayers, as together we commend them into God's safe keeping. In life and in death we try not to forget that what we do for the least of these, we do unto him.

The Revd Pat Southgate, Chair of Routes to Roots and Chaplain to the Homeless in Poole



Some 25 clients enjoyed our traditional Christmas Day lunch followed by a quiz organised by client Executive Committee member John.

Calling All Online Shoppers

Buy online and raise money for R2R at absolutely no expense to yourself by visiting your favourite retailers through 'Easy Fund Raising'. Log on to the site, register yourself and the charity, Routes to Roots, that you would like to support and start shopping.

Every time you buy from one of the businesses on their list, R2R will receive a percentage of what you spend - at no extra cost to you:

<http://www.easyfundraising.org.uk/causes/routestoroots>

To donate to Routes to Roots, text **RTOR41 £2** (£5 / £10 / £££) to **70070**

or donate online at: <https://mydonate.bt.com/charities/routestoroots-pool>

Like Routes to Roots on Facebook at: <http://www.facebook.com/RoutestoRootsHomeless>



FROM THE COMMITTEE

Update on CIO Application

The new CIO constitution was formally adopted by the Trustees on 14 January. This has now been submitted to the Charities Commission and we expect to hear back in March, which will allow us to switch over on 1 April, the start of our tax year.

Our official name will become Routes to Roots Poole CIO but informally we will continue to be Routes to Roots or R2R. We will have a new charity number. All decisions henceforth will be made by an elected Board of Trustees and our Executive Committee will continue as an appointed (rather than elected) Stakeholder Committee to ensure we continue to include salaried staff and representatives of our volunteers, the soup runs and clients in our discussions. Once our application is approved we will publish it on the website and we plan a special edition of the newsletter.

Sarah Percy



EXECUTIVE COMMITTEE

CHAIR & TRUSTEE	Revd Pat Southgate
TREASURER & TRUSTEE	Sarah Percy
HON SECRETARY	Lynn Foster
TRUSTEE	Kate Mellor
TRUSTEE	Susan Gittins
MEMBER	Jenny Elson
MEMBER	John Parsons
MEMBER (Co-opted)	Ruth Meaden
OUTREACH WORKER	Alan Cook *
ADMINISTRATOR	Caroline Foy *
MANAGEMENT SERVICES	Gabi Sanger-Stevens *

Routes to Roots Office
Skinner Street URC, Poole BH15 1RQ
Tel: 01202 667880 / 07901 387643
office@routestoroots.org
www.routestoroots.org

Committee & Trustees elected at R2R AGM on 20 June 2013
* ex officio members of committee

OUR SUPPORTERS



...and many Churches, Christian groups and Businesses in Poole and the surrounding area.

Founded on Christian principles, and registered as a charity in 2002, Routes to Roots seeks to help all homeless people in Poole regardless of their faith. We hold drop-in sessions to provide immediate social and spiritual support as well as the basic necessities for life: food, clothing, a place to wash and a place to rest. We help to house rough sleepers and follow up to identify what each person needs to move forward and to maintain their housing and independent living.

MANAGEMENT REPORT



R2R and BCHA Poole Outreach Support Team 2013 Poole Outreach Support Team							
Service Users	Jun	Jul	Aug	Sep	Oct	Nov	Dec
Rough Sleepers	20	27	25	30	27	23	22
Sofa Surfers	10	6	4	6	12	9	16
Outcomes							
Active Rough Sleepers	10	23	22	23	15	14	12
Sofa surfers	4	6	4	3	8	9	3
Emergency accommodation	3	3	3	3	5	3	4
Planned Moves	3	2	3	4	8	6	4
Unplanned Moves	10	2	0	3	8	0	10
<p>Evening Drop-Ins Jan-Dec 2013 2276 Hot Meals Served</p> <p>40% rough sleepers - 20% sofa surfers - 40% others recently housed</p> <p><i>Hill Street Baptist Church Hall and Skinner Street URC Church Hall</i></p>				<p>Afternoon Drop-Ins Jan-Dec 2013 (closed Aug) 1746 Lunches Served</p> <p>40% rough sleepers - 20% sofa surfers - 40% others recently housed</p> <p><i>Skinner Street URC Church Hall</i></p>			
Average Attendance Tuesdays			20	Average Attendance Mondays			19
Average Attendance Fridays			24	Average Attendance Thursdays			18
<p>All Drop-Ins Jan-Dec 2013</p> <p>40% rough sleepers – 20% sofa surfers – 40% others recently housed</p> <p><i>Hill Street Baptist Church Hall and Skinner Street URC Church Hall</i></p>							
Number of individual clients throughout the period							280
Maximum number of individuals in any one month (October)							100
Some have been with us for some time, others only occasionally and some for only 1-2 sessions							

Successful Grant Applications

The Borough of Poole has awarded R2R £1655 from its Adult Social Care fund as a contribution to the maintenance of the current Afternoon Project that enables service users to meet professionals and partake in activities such as art therapy, drama, cookery, food hygiene and photography.

ESG Robinson Charitable Trust has awarded a grant of £1,000 to support R2R Drop-Ins.

The MacDougall Trust has given us a grant for £200. The Trust makes small one-off grants to people of all ages, who are 'In Need', and live in Dorset.

Gabi Sanger-Stevens



THANKS TO ALL OUR FUNDRAISERS



The R2R carol singers raised their voices and £104.74 at Sainsburys on 14 December. St Paul's Canford Heath carol singers donated £400 from two days' singing at Asda Canford Heath.

Halifax Pirates Start Fundraising

Pirates flocked to Poole in October when staff at Halifax Bank, Falkland Square held a charity auction at the branch to raise money for Routes to Roots. Among the reprobates at the pirate-themed fun day were Gabi and Liz from R2R. Halifax staff have chosen R2R as their charity for the year.

Cantilena Concert

Under the musical direction of Dr Jane Oakland, Cantilena ladies choir gave a Christmas concert in aid of R2R at Broadstone United Reformed Church, raising £170.

Little Red Roaster Christmas Charity Auction and Raffle

Independent coffee house and roastery, Little Red Roaster donated £788 from a charity auction and raffle in aid of Routes to Roots. Founded in 2010, Little Red Roaster single origin coffees come from all over the world, and most can be traced back to single estates and co-operatives where the beans were grown. They also produce their own espresso blends. As well as coffee, they offer great rare teas, single origin chocolate, and a range of bagels, cakes and cookies.

www.littleredroaster.co.uk/

Grateful thanks to the following

- *Amphibious Chapter 9050 - £145
- *Ashley Masonic Lodge - £746
- *Broadstone Methodists - £200
- *Broadstone URC - £228.05
- *Buckland Road Baptist Church - £250
- *Children, Young People & Learning (Borough of Poole) staff - £41
- *Church of the Holy Angels, Lilliput - £50
- *Church of the Transfiguration,
- *Canford Cliffs & Sandbanks - £250
- *Dorset Guitars - £150
- *Durable - £500
- *Lantern Church, Canford Magna - £155
- *Nationwide in Bournemouth - £350
- *Nationwide in Poole - £350
- *Olives et Al restaurant in Dorchester - £108
- *Parkstone Baptist Church - £160
- *Poole Contact Centre - £60
- *Poole Printmakers - £36
- *Poole Scouts Group Active Support Unit - £60
- *Saturday Night Soup Run Team - £25
- *St Georges Church, Oakdale - £200
- *St Mary's Longfleet - £1457.74
- *The School of Health & Social Care, Bournemouth - £115 from a festive coffee morning and bake sale
- *Waitrose Poole Community Matters Token Collection - £266

*...and from many individuals - £815

Donations in kind

- *Asda Poole - all the food for Christmas day lunch and £50 from token appeal
- *Barclays Community Group - tinned food collection
- *Christ Church Creekmoor - Christmas stockings
- *Greggs, Poole - cakes
- *Liverpool & Victoria - clothes & food
- *Poole Sea Cadets - sleeping bags
- *Skinner Street URC - Christmas gifts
- *St Edward's School - boxes of chocolates

NEW SUPPORT



R2R - the Chosen Charity

Following a talk about the work of Routes to Roots at Hillbourne School & Nursery in October, the students chose us as their charity of the year. Scott, R2R Outreach Worker, and Alan, former client and now much-appreciated chef volunteer at drop-ins, did a great job in sharing news of our work and Alan's personal story as well as answering great questions from the youngsters.

www.hillbourne.poole.sch.uk/

Chartered building company Greendale Construction has chosen R2R as one of its nominated charities and has already presented us with a cheque for £1258.50 raised at their Christmas party, auction and raffle. In return we presented the company with our first Star Fundraiser certificate. www.greendaleconstruction.com/

Durable UK Ltd

Many thanks to our new supporter, Durable UK, who have given £500 to help our work. One of the leading office product manufacturers in Europe, Durable has a large portfolio of products including name badges, files & folders, desk accessories, computer cleaning products, signage, presentation systems, self adhesives, waste management and office furniture. They have also generously given us information display stands and a mass of office items, including soft plastic file folders, name badges, envelopes, cleaning materials. www.colour-your-office.co.uk

The Rucksack Project Comes to Poole

Many thanks to all who participated in the Rucksack Project in Poole and surrounding area for the incredible number (over 20) donated to us in December - as at early January, all but one had already been claimed by our clients.

The Rucksack Project is not a charitable organisation, but a worldwide movement born out of a simple idea to help those sleeping rough on the streets during the freezing winter months. The idea is an incredibly simple one: Go to charity shops, get a rucksack, sleeping bag, flask (fill with hot soup), spoon, gloves, hat, fleece, undies, socks and extra food, take it out and give it to a homeless person – or organisation helping the homeless. <http://rucksackproject.org/>

Discarded Marathon Clothes Add to Our Stores

In October Routes to Roots added a large quantity of suitable clothing to our supplies by collecting tops and trousers discarded by runners at the start of the Bournemouth Marathon.

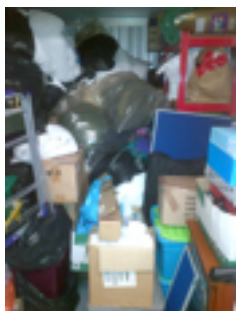
GSI Events, organisers of the Bournemouth Marathon Festival, invited R2R to collect clothing left at the start pens by some 6,000 runners in the half-marathon and full marathon. This involved a pre-dawn start for the volunteer collectors, wearing hi-viz vests, who picked up and then sorted over 20 bags of clothing. In addition £37.50 was added to our funds from selling unwanted items to Cash for Clothes – this was immediately used to buy storage equipment for the space kindly donated us by our supporter Big Yellow. Many thanks to our R2R volunteers, staff and family members, and students from Bournemouth University.





BIG YELLOW STORAGE SOLUTIONS

Storage is a huge potential problem for any organisation with no permanent premises, especially for charities such as ourselves who need to keep their non-client costs as low as possible. Consequently we are extremely grateful to Big Yellow who have provided us with free storage ever since opening in Poole in 2009.



However, the generosity of individuals and organisations with donations of clothing keeps us on our toes in terms of making optimum use of our space.

A while back, a team from Nationwide helped R2R by assembling a couple of sets of shelving for our storage unit. We had to empty half of the unit to get the new shelves in and then load them up with the items we had taken out. The storage unit was a bit tidier, briefly...

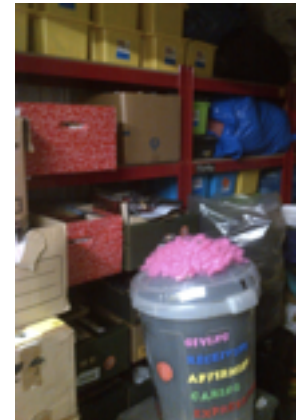
Since then, we have been adding to our supplies and getting more and more full, to the point that it was something of an adventure opening the door to see if there was any more space. Something had to be done!

Enter team Germann Keeling (i.e. Marcus and Gabi) at the end of last year to put in a further five sets of shelves and to sort the items into some semblance of order. The task was completed over several days and it was quite interesting watching other Big Yellow users looking in wonder at the piles of clothing and other items in the unit.

There are still things that need sorting and of course more donations continue to come in, but we no longer have to swim through a sea of black plastic bags to get what we want!

Big Yellow Offer to R2R Supporters

Big Yellow Self Storage at Poole, which has generously supported R2R with free storage space for a number of years, has announced a company discount scheme for our members, volunteers and church supporters.



Mention R2RBY01 when discussing your storage requirements and they will give you a 10% discount off their current rates in addition to other offers currently running e.g. First 8 weeks at 50% off.

Storage can be used for everything these days from decluttering your spare room to moving home and that is made all the more easy by offering a variety of over 20 storage room sizes starting from £6.30 per week. You can take the space for a week or a lifetime so finding a space that is right for you couldn't be easier.

For more information call Big Yellow Self Storage on 01202 846600, email: poole@bigyellow.co.uk or visit: www.bigyellow.co.uk Big Yellow Self Storage for Home and Business.

- •
- Please do remember to mention R2R if you use any of the great local and national companies / organisations that sponsor us. You can find a full list on our website under 'Links'.
- •



PEOPLE MATTER

Ruth Meaden, Executive Committee Member



I have lived in Poole for the past 27 years and three years ago I joined my new church, The Beacon on Canford Heath. I became interested in the Church's participation in the Saturday evening soup run and decided to volunteer as a helper. It is a privilege being

involved with the men and women of our homeless community. Recently I have taken over the role as coordinator of our church's involvement in the Saturday evening soup run and feel very passionate about the cause. I feel most honoured to be accepted as a committee member for Routes to Roots and hope that the future will enable me to be of help in many more ways.

Farewell to Liz



Liz Bailey, our Outreach and Support Co-ordinator, left R2R in December. We are very grateful for all the work that Liz has done, for her prayerful and compassionate attitude to our clients and for the support that

she has given to so many. Liz will be very much missed by all of us and particularly by the clients. We wish her well in whatever direction God decides to take her.

Heartwarming Stories

Helen, one of our members, recently told us how a dinner guest spotted and read through the Autumn R2R newsletter featuring the Big Breakfast appeal. At close of dinner he asked firstly for everyone's attention and secondly for £3.50 each as tribute for their hostess' lovely food - to buy a hot breakfast for a rough sleeper. As a result Helen handed over £21 for six breakfasts. What a great idea!

Thomas, aged 8, sent us this card with £10.



I want to help homeless people!

He wrote: "Dear Routes to Roots, I have given some money to my mum. To help homeless people. I am Thomas 8 years old. Love Thomas".



.....
• **We'd Like to Tell You a Story...** •
• ...the story of Routes to Roots. •
• We can come and speak on any day, to •
• all ages, in all places. Please contact •
• Caroline Foy, our Administrator, to •
• arrange a visit. •
• Tel: 01202 667880 / 07901 387643 •
• Email: office@routestoroots.org •
.....



AT WORK WITH OUR CLIENTS

Snippets from R2R Team Diary

December 2013

* Called ambulance for client when she fell on the path following R2R afternoon drop-in.
* Helped client at DLA Tribunal where he was reinstated and higher payment was recommended. * First winter breakfast vouchers issued for Fisherman Café. * Supported client to reinstate Job Seekers Allowance and Housing Benefit and liaised with landlady to sustain the tenancy. * Attended Poole Town Network Forum with Healthwatch Dorset, who are now attending drop-ins. * Teen Challenge rep attended afternoon drop-ins to help individual clients with drug or alcohol issues. * Community Mental Health Nurse attended afternoon drop-in to help those with mental health issues. * Holton Lee client volunteer gained job interview. * Client prepared a pasta soup and a pear and apple crumble with custard for drop-in attendees. * Liaised with Highways Enforcement Officer, Anti Social Behaviour Team and Local Councillor to enable homeless client sleeping in a tent to be allowed to remain there rather than being moved on, until he moves into permanent accommodation in January. * Liaised with various people offering rucksacks and warm clothing, Christmas gifts etc.



Follow the R2R Team Diary on FaceBook: <http://www.facebook.com/RoutestoRootsHomeless>

Outreach Changes

The new contract for the POST rough sleeper outreach work, carried out by R2R and BCHA, has been awarded to CRI (who currently do this work in Bournemouth) from April 2014. We did not tender for this contract because it covered both the Poole and Bournemouth Boroughs. We are in contact with CRI to discuss how they will operate in the Poole area and how we can co-operate. Our Outreach & Support Co-Ordinator, Liz, had already decided to leave and consequently the R2R Trustees are considering our staffing requirements as part of a complete strategy review rather than immediately seeking a replacement.

R2R has now centered all our operations at Skinner Street URC. We will continue to provide a personalised service to rough sleepers and vulnerably housed adults, to enable them to become rooted in the community. This will be done through our four Drop-Ins and existing indoor and outdoor project work, plus new ventures as we secure adequate funding.

There will be more on this in a special edition of the newsletter.

You CAN Help Us

For information about becoming a member, volunteering or making a donation please visit the R2R website.

Annual membership costs only £10 for an individual or £25 for a Church, School or Business.

Membership, donation and gift aid form: <http://www.routestoroots.org/updates/volunteering-membership>

Volunteer application form: <http://www.routestoroots.org/updates/volunteering>