

Charity No. 1093689

## COUNTING OUR BLESSINGS



I will always remember my grandmother sitting at her piano singing 'Count your Blessings, name them one by one and it will astound you, what the Lord has done!' Counting our blessings is certainly something we are doing as we look back on the last 10 years. The churches who have given us space to have our Drop-Ins, our small army of volunteers who have given us their time and their talents and our Outreach workers who have always gone the extra mile to get vital help for those on the streets. We have been blessed by all of you who have walked, cycled, fasted, held coffee mornings, quiz evenings, concerts and by the churches who have given us their collections. And... we do not forget Sebby and Josh who gave us their pocket money during Lent!

Last, but not least, we have been blessed by all of you who have sat through endless meetings reaching late into the night and then gone away to write policies, produce budgets, do health and safety checks and maintain rotas. At our last AGM three of our long-standing trustees, Jennifer Harrison, Paul Richards and Dick Dyke, decided it was time to have a much-needed break. We thank God for them and for all they have given to R2R over the years, which has been a real blessing. We are now looking for volunteers, who have the ability to do these maybe less exciting but just as vital jobs, to take their place on our committee. Please get in touch with us if you think you can help us in any way. We look forward to counting YOU as yet another 'Blessing from God'.

*The Revd Pat Southgate*

Chair of Routes to Roots and Chaplain to the Homeless in Poole



On 9 June the Quaker Mobile Library in partnership with Routes to Roots made its debut appearance at St Peter's Summer Fayre. Pat Southgate welcomed Councillor Carol Evans, Poole's Mayor, who showed great interest in the library and our work.

*The library schedule, when ready, will be posted on the Routes to Roots website.*



## REPORT FROM THE AGM

The Financial Report for the year ended 31 March 2012 shows a £4,538 excess of receipts over payments.

Our membership now stands at 64 individuals and 17 churches or organisations, which is a substantial increase from last year (30% and 70% respectively). This is in contrast to last year when the membership number remained static.

Other important sources of funding were Gift Aid on donations, grants of Seedbed funding from Bridging Communities and, of course, the joint POST contract with BCHA from the Borough of Poole.

The decrease in operating costs compared with last year is mainly due to not having a Support Manager from July. Instead we decided to contract for General Manager services for six months, and this has proved such a success that we have renewed the contract.

Food costs have increased, and costs of renting the hall and the office have also increased to cover higher costs of electricity and heating.

We start the 2012/13 financial year in an uncertain position as the POST contract is due for renewal in November. We estimate that it will cost about £64,000 to continue all our current work, and without the POST contract and additional sources of funding we will start eating into our reserves.

However we continue to step out in faith that God will provide and have allocated £23,799 of our reserves towards finding a permanent home for Routes to Roots.



### EXECUTIVE COMMITTEE

CHAIR & TRUSTEE	Revd Pat Southgate
TREASURER & TRUSTEE	Sarah Percy
HON SECRETARY	Ann Tyson
TRUSTEE	Kate Mellor
MEMBER	Susan Gittins
MEMBER	Jenny Harris
OUTREACH WORKER	Liz Bailey *
ADMINISTRATOR	Caroline Foy *
MANAGEMENT SERVICES	Gabi Sanger-Stevens *

Routes to Roots Office  
Skinner Street URC, Skinner Street, Poole, BH15 1QR  
Tel: 01202 667880 / 07901 387643  
[office@routestoroots.org](mailto:office@routestoroots.org)  
[www.routestoroots.org](http://www.routestoroots.org)

Committee & Trustees elected at R2R AGM on 21 June 2012  
\* ex officio members of committee

*Founded on Christian principles, and registered as a charity in 2002, Routes to Roots seeks to help all homeless people in Poole regardless of their faith. We hold drop-in sessions to provide immediate social and spiritual support as well as the basic necessities for life: food, clothing, a place to wash and a place to rest. We help to house rough sleepers and follow up to identify what each person needs to move forward and to maintain their housing and independent living.*

Routes to Roots is supported by Big Yellow Storage, Conical Sphere Web Design & Group UK, Princeroft Willis LLP, RGL Displays Ltd and The Fisherman Café, as well as by many Church and Christian groups in Poole and the surrounding area.



## REPORT FROM MANAGEMENT SERVICES

### Afternoon Drop-Ins 579 Lunches Served in May, June and July 2012

40% rough sleepers - 40% sofa surfers -  
20% others recently housed

*Skinner Street URC Church Hall*

Average Attendance Mondays <i>(closed on Bank Holidays)</i>	<b>24</b>
--	-----------

Average Attendance Thursdays	<b>24</b>
------------------------------	-----------

### Evening Drop-Ins 717 Hot Meals Served in May, June and July 2012

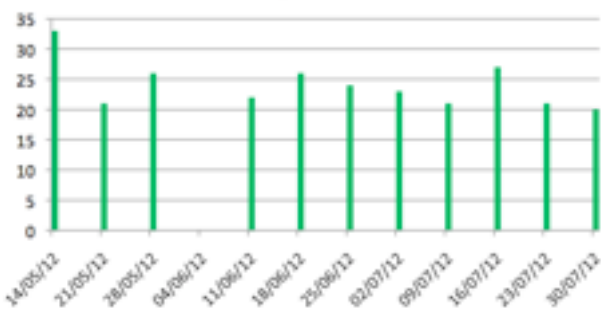
40% rough sleepers - 40% sofa surfers -  
20% others recently housed

*Hill Street Baptist Church Hall and Skinner  
Street URC Church Hall*

Average Attendance Tuesdays	<b>27</b>
-----------------------------	-----------

Average Attendance Fridays	<b>26</b>
----------------------------	-----------

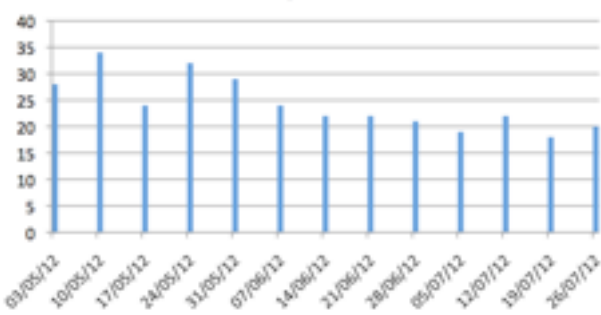
**Monday afternoon**



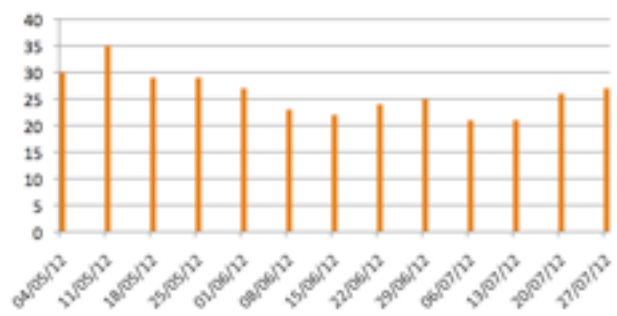
**Tuesday evening**



**Thursday afternoon**



**Friday evening**



*Gabi Sanger-Stevens*

### First Annual Awards Ceremony for R2R Volunteers

This will take place later this year. Councillor Carol Evans, Poole's Mayor, has agreed to host the event in the Mayor's Parlour and present the awards. We are organising this ceremony in recognition of all our volunteers. R2R now has 80+ great volunteers – up from 55 seven months ago. Many are also members, and they all give their time and skills with enthusiasm and dedication. They are all worthy of award and we could not continue without them.

---

**Date Set for 2013 AGM: 20 June 2013**



## A SUMMER OF ACTIVE SUPPORTERS

### Barclays Team Cleans Up

Rachel Clement, Ben Platts, Alan O'Connor and Dawn Marks (*below from left*) from Barclays volunteered with us for a day in July. In the morning they worked on our new Mobile Library which was badly in need of some TLC after the heavy downpours of recent weeks/months. There had been some water ingress and there were areas that needed repainting and cleaning up which they helped with.



The afternoon saw them at Big Yellow, who kindly donate storage space to us, where they removed half the contents of the storage unit onto trolleys to release space to put in the two sets of shelving which we had bought. The Barclays foursome split into two teams and competed to see who could get their shelving completed first. They had lots of fun working out how to put the shelves together – reading the instructions was found to be helpful, as a last resort. There was a lot of laughter throughout. Once the shelves were ready, they unloaded the trolleys and arranged everything. We now have a much better environment with more space. Next step will be to get more shelving to install along the other two walls.



*Barclays' commitment to citizenship involves playing a broader role in the communities in which they live and work through community investment programmes and the direct efforts of their colleagues.*

[barclays.com](http://barclays.com)

### Siemens Summer Games

Siemens kindly dedicated their annual summer staff celebration at the end of July to fun activities run by volunteers to raise money for Routes to Roots and The Victoria Education Centre.



They invited us to bring along the library van and join them for the afternoon to publicise the great work of our charity and also to collect jeans, trainers and t-shirts that they asked people to bring in.

*Siemens encourages and supports all employees to do voluntary work in the community – with charities, schools and environmental groups. Funding is also made available to support local groups.*

[www.siemens.co.uk/mobility](http://www.siemens.co.uk/mobility)

## MEET OUR CORPORATE SUPPORTERS



### RGL Displays

RGL Displays was formed in 2009 by Robert Russell. After many years working in the print trade Robert found himself out of work in 2009 and, after finding it hard to find another job, decided to set up his own company providing exhibition stands



and portable displays.

Robert has strong links with Poole and runs RGL from Arena Business Centres near Macro. RGL Displays first heard of Routes to Roots when asked to supply a quote to produce a large number of fundraising display boards. Robert suggested he could do better than that and offered to supply them free of charge in the hope that they would inspire others to donate.

Since 2009 RGL Displays have steadily grown and now has three high quality inkjet printers to ensure that they keep up to the high standards that Robert set out to achieve when starting RGL back in 2009. Robert comments: "Times are hard for most small businesses and individuals at the moment and everyone is looking to buy for less so we try to keep our costs to a minimum without compromising at all on our quality of product or service."

It is this attention to quality and service that Robert believes will stand RGL Displays in good stead for the future and enable them to further help worthy causes like Routes to Roots.



RGL not only sells display stands and exhibition panels to Poole but has a well-managed website and supplies many of the UK's well-known companies with items such as pop-up stands and exhibition graphics as well as banners and posters.

If you would like to find out more about RGL Displays, what they sell or how they can help you with your display requirements please visit their website at:  
[www.rgl-displays.co.uk](http://www.rgl-displays.co.uk)



## R2R SUMMER PROJECT: HOLTON LEE

The project started in mid July and straightaway the guys who came along loved it and showed a real willingness and commitment to be involved. As a group we have been given 'ownership' of the Maze, which had been neglected for some time, and so our first task was to do some major tidying up before we could sit down together to think creatively about how we develop it. We have also been given the cottage gardens to maintain. These have also become massively overgrown and some hard work will be needed to clear large areas that have become covered in a thick forest of ferns and bracken.



It was really hot on the day we began and lots of cold drinks were needed throughout the day. In spite of the heat their enthusiasm spurred the guys on and a significant difference was seen after only a few hours. When lunchtime came the guys appreciated the break and the hearty packed lunch, which R2R provides for everyone including volunteers. In this lovely relaxed environment many deep and meaningful conversations have already taken place and trust and relationships are being built.



We are very grateful to Holton Lee for giving us this opportunity, and for the warm welcome they give to all of us, and for the generous way they allow us to share their facilities and make us feel very much at

home, which for a homeless person is such a wonderful gift, and the guys really love and are committed to it.

We have now received Community Development Funding for this project which will cover this summer, autumn and probably early winter (20 weeks +). However, we do need a larger group of volunteer drivers / volunteers to be able to develop a full rota. Volunteers can help with the ground work/gardening or just with preparing lunches and chatting with the guys. Drivers are compensated for their mileage.

If you have some time and would like to help with this motivational project, please contact the R2R Office at the address on *page 2*. Thank you.

*Holton Lee covers an area of 350 acres of heathland, saltmarsh, reedbed and woodland, most of which is protected as a Site of Special Scientific Interest. Its purpose-built space and natural surroundings provide opportunities for disabled people to host events, participate in the arts, or simply relax and enjoy the environment.*  
<http://www.holtonlee.co.uk/>

## NEWS

### Hello from Jenny Harris,

*Newly Elected to the Executive Committee*

For the last four years I have had my own business, which was a coffee shop and a mobile coffee van. I decided early this year to sell my business as I wanted to do something different. I first heard of Routes to Roots when they visited my church and I was intrigued, so I went online to find some more information; then I prayed to see what God thought. That night I had a dream that I was homeless begging on the High Street so I took that as a clear sign that this was for me! I have been volunteering once a month Friday evenings and I am currently team-leading the afternoon sessions.



### Junk Percussion Workshop

We are grateful to Activate Performing Arts, and Poole Arts Team for suggesting R2R would be a good group to work with, for a drumming workshop for our clients on August Bank Holiday. It was great fun and everyone gave the drums, made from reclaimable plastic, a good hammering.



Activate manages the biennial Inside Out Dorset festival and runs alongside it a Learning and Participation programme, which often uses Dorset-based artists. This year Trans Expresse brought a processional piece, involving drumming, to Poole Quay on 1 September and Activate asked James Kimber to run a drumming workshop for us:

[www.insideoutdorset.co.uk](http://www.insideoutdorset.co.uk)

[www.activateperformingarts.org.uk](http://www.activateperformingarts.org.uk)

### We'd like to tell you a story...

...the story of Routes to Roots. It's a true story about how we first began and how and why we've evolved over the years. It's a story we tell not only with words but also with pictures and we have past clients whose lives have been changed and who are willing to come and tell their stories too.

We can come and speak on Sundays during times of worship or during the week to all ages in all places. We'd like to tell you our story, it's a good story, a true story and we tell it from the heart.

Please contact Caroline Foy, our administrator, who will be pleased to arrange a visit from Pat and/or Liz.

Tel: 01202 667880 / 07901 387643

Email: [office@routestoroots.org](mailto:office@routestoroots.org)

### R2R on Dorset Eye

*Dorset Community News Reported by the Public*

This is Dorset's only news outlet for the people of Dorset by the people of Dorset. Take part and discuss what matters to you! Start by selecting the area of Dorset you live in. Within each area you will find a whole host of topics to read about, discuss or report on – and already lots of news about Routes to Roots but room for more of your comments: [www.dorseteye.com](http://www.dorseteye.com)



## YOU Can Help Us

### ● Please consider becoming a Volunteer

R2R relies heavily on our small army of volunteers. Opportunities exist in the following areas:

- \* Morning Outreach, Afternoon Projects, Evening Drop-ins
- \* Befriending Scheme - please contact the office
- \* Mobile Library - driving, staffing, including preparing books
- \* Outdoor activities - accompanying clients on organised events
- \* Providing skills training for clients, health & personal care support to clients
- \* Administrative support - helping with mail shots, preparing for events

For details of volunteering, please contact our Administrator on 01202 667880 or [office@routestoroots.org](mailto:office@routestoroots.org)  
Volunteer application forms are also available at: [www.routestoroots.org](http://www.routestoroots.org)

### ● Please consider making a Donation

- \* £3 buys a rough sleeper a cooked breakfast
- \* £10 buys a sleeping bag
- \* £200 helps to make an empty flat a home
- \* £10 buys a pair of jeans
- \* £40 provides food for an evening drop-in

### ● Please consider becoming a Member

- \* Annual membership costs only £10 for an individual or £25 for a Church, School or Business.

To make a Donation or become a Member, please complete the form below or visit the website to pay securely via the Internet or download a standing order: [www.routestoroots.org/updates/volunteering-membership](http://www.routestoroots.org/updates/volunteering-membership)

## Membership Application and Donations

I would like to become a Member for £10 / £25 (*circle as appropriate*)

I would like to make a Donation to Routes to Roots to the value of £\_\_\_\_\_

Name (*please print*): \_\_\_\_\_

Address: \_\_\_\_\_

Post Code: \_\_\_\_\_

Tel: \_\_\_\_\_

Email: \_\_\_\_\_

*“When you did it to the  
least of these - you did  
it to me.”*  
Matt 25:35

I would like to Gift Aid my donation. I confirm I have paid or will pay an amount of Income Tax and/or Capital Gains Tax for the current tax year (6 April to 5 April) that is at least equal to the amount of tax that all the charities and Community Amateur Sports Clubs (CASCs) that I donate to will reclaim on my gifts for the current tax year. I understand that other taxes such as VAT and Council Tax do not qualify. I understand the charity will reclaim 25p of tax on every £1 that I have given.

I enclose a cheque payable to 'Routes to Roots' to the value of £\_\_\_\_\_

OR Please debit my card to the value of £\_\_\_\_\_ : Mastercard / Visa / Solo / Visa Debit (*circle*)

Card No: \_ \_ \_ \_ / \_ \_ \_ \_ / \_ \_ \_ \_ / \_ \_ \_ \_ / 3-Digit Security Code: \_ \_ \_

Valid from: \_ \_ / \_ \_ Expiry on: \_ \_ / \_ \_

Name (*as it appears on the card*): \_\_\_\_\_

Signed: \_\_\_\_\_

Date: \_\_\_\_\_

Please return to: The Administrator, The R2R Office. Skinner Street URC, Poole BH15 1QR